



emami@kuritkara.com	/	-
		-
	Irhamidzadeh@yahoo.com	-
		-
	A-E-project@azarwater.com	-
jasgari@ghods-		-
	niroo.com	-
arab@kuritkara.com	/	-
vmortazavi@ghods-niroo.com		-

()



(.....)



PMF

PMP

(Norstedt, et al., 1992)

(ICOLD)

PMF

(FEMA)

(USBR)

(Corps of Engineers)

(FERC)

(NRCS)



(TVA)

()
()

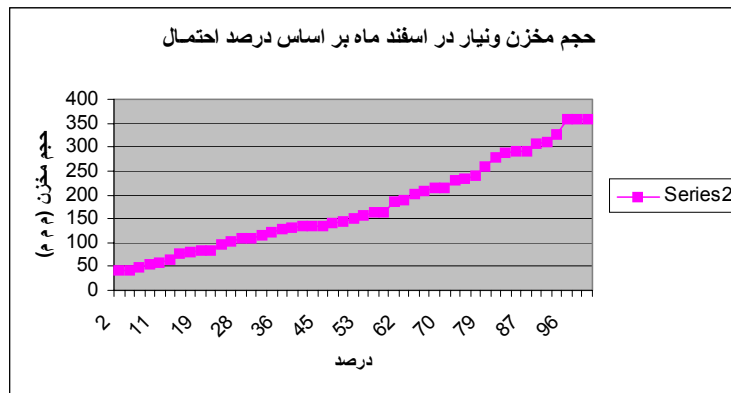
(FAST)



()



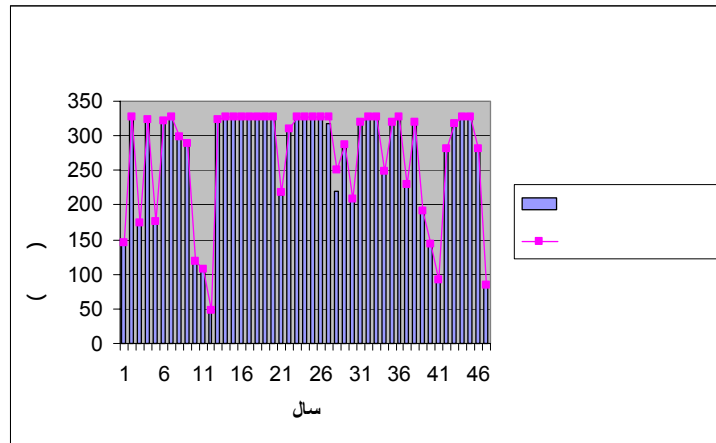
()





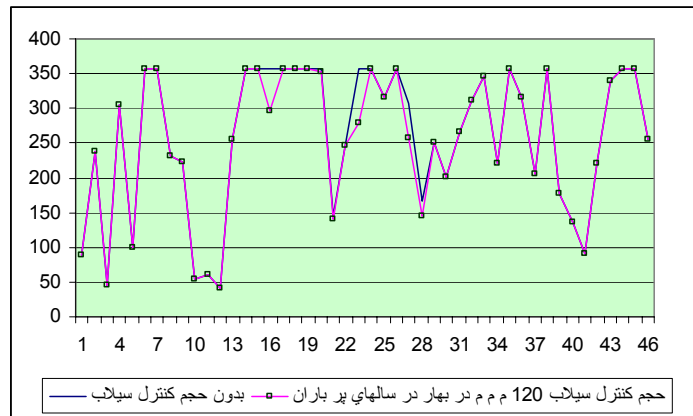
:

() ()

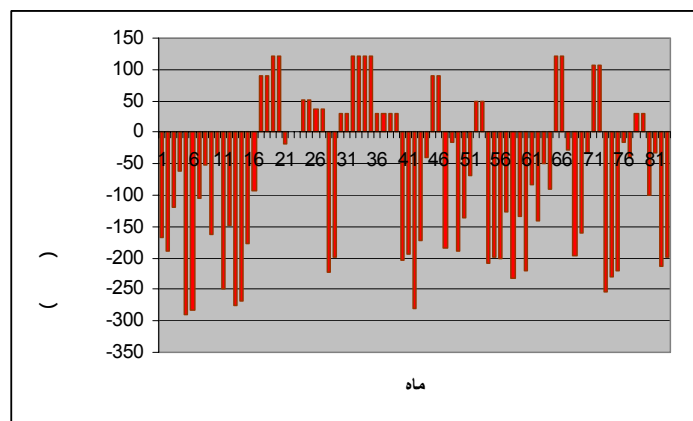


:

:



:



:



:
:() -

:

PMF						()
						()
						()
	<					()
	>					()

-
-
-
-

Assarin, A. Y., " Ecological and economic consequences of the Volga river flow control by Volga-Kama Cascade reservoirs ", Proceedings of International Symposium on Dams and Extreme Floods, Granada, Spain (Topic B), 1992, ICOLD, P 93-102.

Beard, L. R., " Hydrologic engineering methods for water resources development , Volume 7, Flood Control by Reservoirs ", The Hydrologic Engineering Center, U.S. Army , California, 1976.

Bergstrom, S.; Lindstrom, G.; Sanner, H.," Proposed Swedish spillway design floods in relation to observations and frequency analysis. ", Nordic Hydrology v 20 n 4-5 1989. p 277-292



- Bradesten, C., Sandell, J., Moller, B., " Application of the new Swedish design flood guildlines in the Lule river, northen Sweden.", Proceedings of International Symposium on Dams and Extreme Floods, Granada, Spain (Topic A),1992, ICOLD, P26-31
- Chang, Tiao J.; Moore, David " Reservoir operation by the use of an expert system" Proceedings - National Conference on Hydraulic Engineering pt 1 1994. Publ by ASCE, New York, NY, USA. p 97-104
- Colon, R. et al, " Flood forecasting. An alternative resepose for PMF at the Saluda dam.", Proceedings of the American Power Conference, V 51, Illinois Inst. of Technology, Research Institute, Chicago, Il, USA, 1989, P999-1002
- Hawley,M., R. McCuen,and A. Rango," Comparison of models for forecasting snow melt runoff volumes ". Water Resources Bulletin, Vol. 16, No.5, Oct. 1980
- ICOLD, " Selection of design flood.", Bulletin 82, ICOLD, 1992.
- ICOLD, " Cost of flood control in dams ", ICOLD, 1996.
- Institution of Civil Engineer " Floods and Reservoir Safety : an engineering guide ", ICE, London, 1996,
- Lee, M. C., " Rule curve operation at Terzaghi dam to pass the probable maximum flood. ", Proc Int Conf Hydropower v 1 (of 3). Publ by ASCE, New York, NY, USA. p 143-152
- Lindsrom, J. et al, " New Guidelines for evaluation of extreme floods in Sweden.", Proceedings of International Symposium on Dams and Extreme Floods, Granada, Spain (Topic A),1992, ICOLD, P16-25.
- Maclaren Engineers Planners and Scientists Inc., " Spring operation of the French river dams ". Public Works Canada, Willowdale, Ontario, Dec. 1980.
- Norstedt, U. et, al ," Re-evaluation of hydrological dam safety in Sweden. ", Water Power and Dam Construction, June 1992, P43-49.