



MODFLOW

shahram80@mehr.sharif.edu

MODFLOW

()

MODFLOW



. []

. []

:

:

-

-

-

-

-

MODFLOW



MODFLOW

()

[]

[]

(Log)

(Time Step)

(Stress Period)



()

()



()

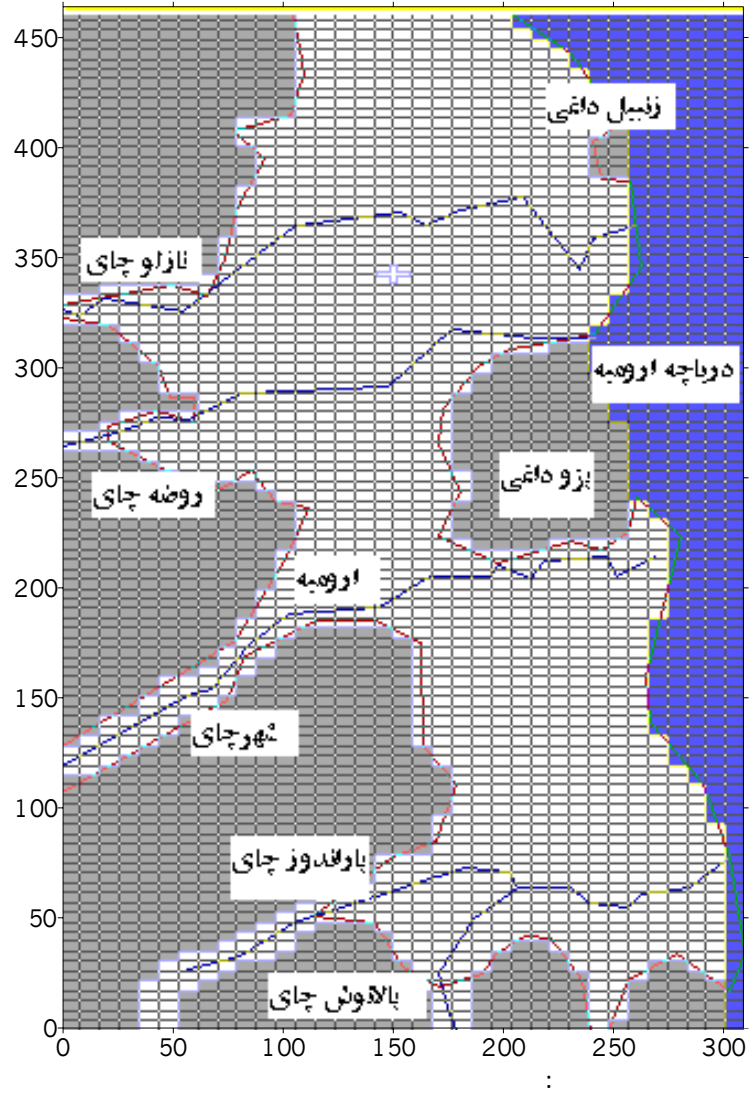
()

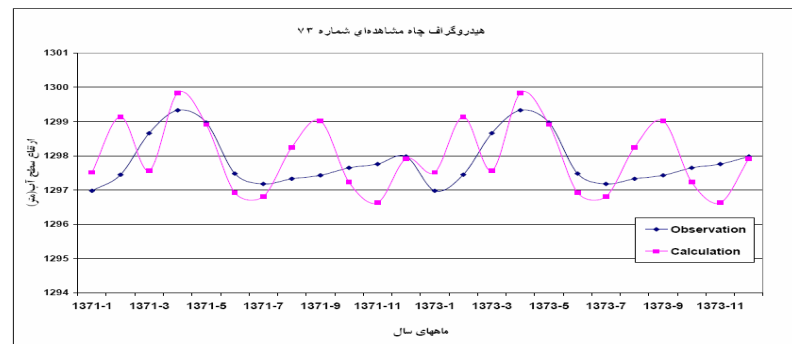
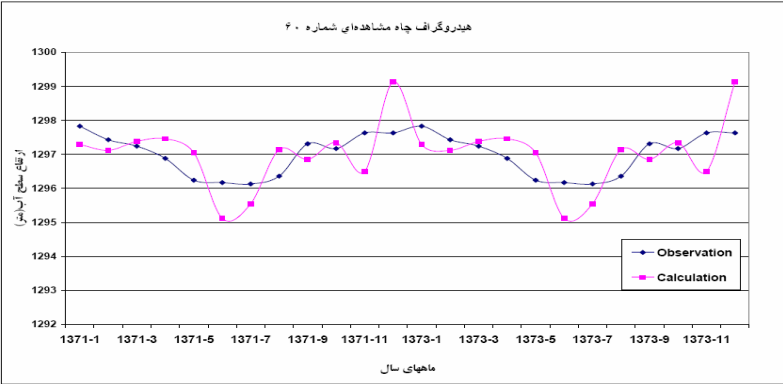
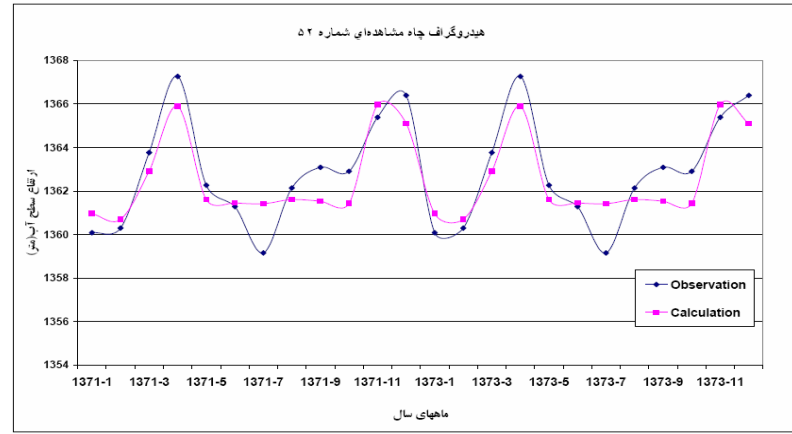
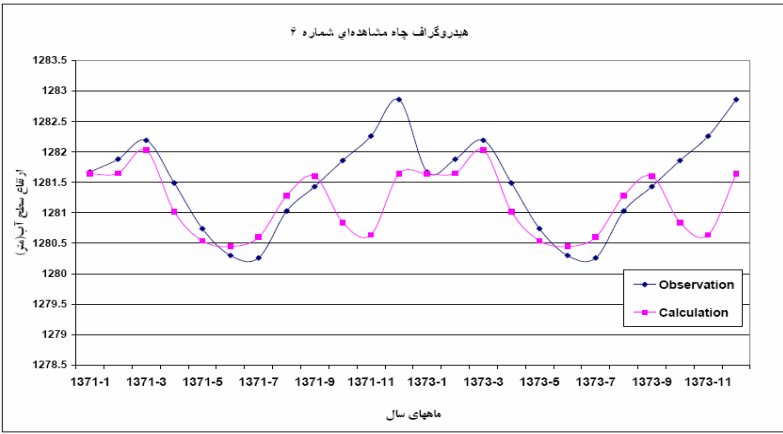


MODFLOW

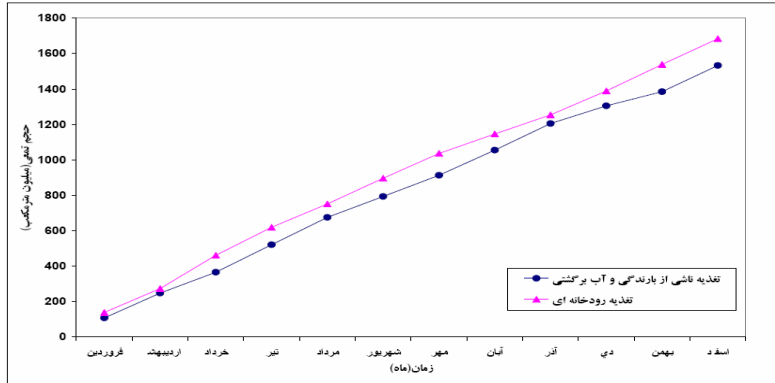
[]

- Anderson, M.P., W.W. Woessmer, Applied Groundwater Modeling, Academic.Press, INC, 1992.
- Mc Donald, M., A. Harbaugh, B. Orr, and D. Ackerman, A Method of Converting No-Flow Cells to Variable Cells in the U.S.Geological Survey Modular Finite-Difference Groundwater Flow Model, Open File Report 91-536, U.S.G.S., 1991.
- Hill, M.C., MODFLOWP, U.S.G.S Water resources Division, Denver, Colorado, 80225-0046, 1992.
- MC Donald, M.G., and A.W. Harbaugh, A Modular Three-Dimensional Finite-Difference Groundwater Flow model, 1993, MODFLOW, Version 3.1, C VISION Pty Ltd, 185 Elizabeth st.Sydney 2000, Australia.



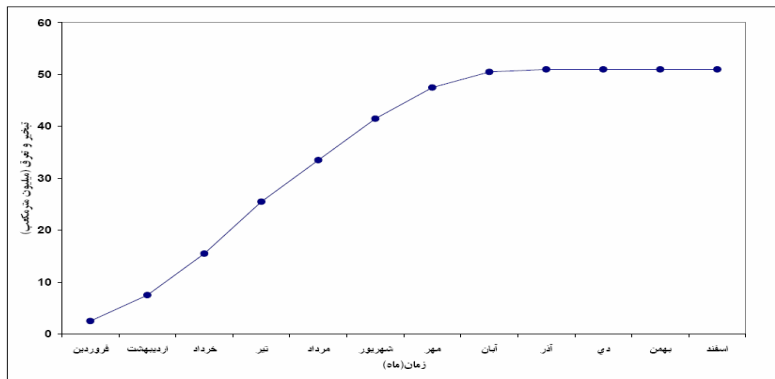


:



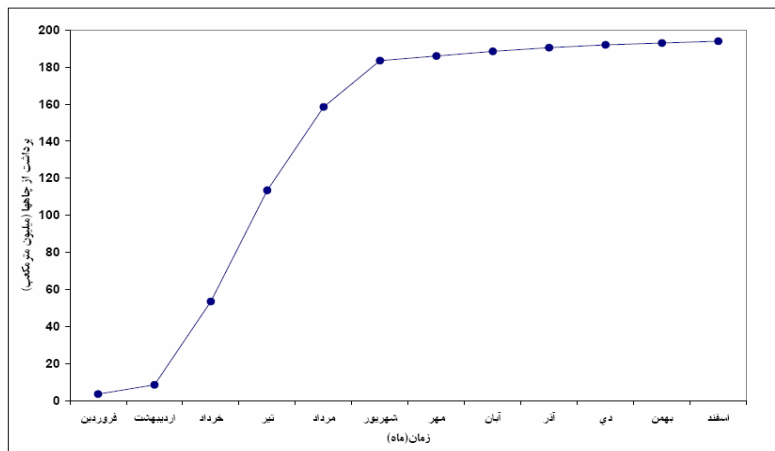
()

:



()

:



()

:

