



kholghi@ut.ac.ir

si_zeidali@yahoo.com

()

)

(

:





() ()
() ()

()

--

--



(kg/m³)

(/)

(/m³)

()

)

(





(+

$$DP = (I + R) - (Q_{out\ dr} - LR) \quad (L^3) \quad :I \quad (L^3) \quad :DP$$

$$(L^3) \quad :Q_{out\ dr} \quad (L^3) \quad :R$$

$$(L^3) \quad :LR$$

$$PW_{irrigation} = \frac{\text{Pr oductivity}}{\text{Irrigation}} = \frac{P}{I} \quad ()$$

$$PW_{Net\ inf\ low} = \frac{\text{Pr oductivity}}{\text{Net\ inf\ low}} = \frac{P}{I + R} \quad ()$$

$$PW_{process\ depleted} = \frac{\text{Pr oductivity}}{\text{Pr ocess\ Depletion}} = \frac{P}{D_p} = \frac{P}{ET_c} \quad ()$$

$$PW_{depleted} = \frac{\text{Pr oductivity}}{\text{Depletion}} = \frac{P}{TD} = \frac{P}{(I + R) - (Q_{out\ d} - LR)} \quad ()$$

()

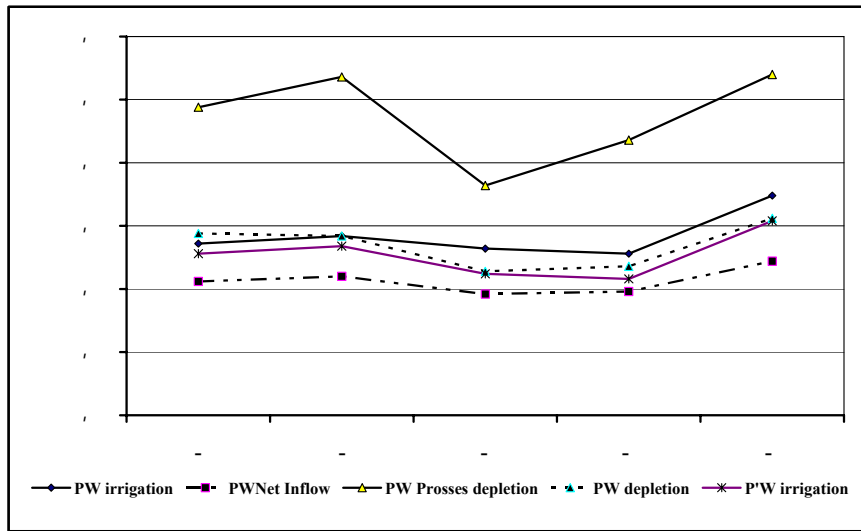
$$P'W_{irrigation} = \frac{\Delta P}{I} \quad ()$$

$\Delta P =$ -



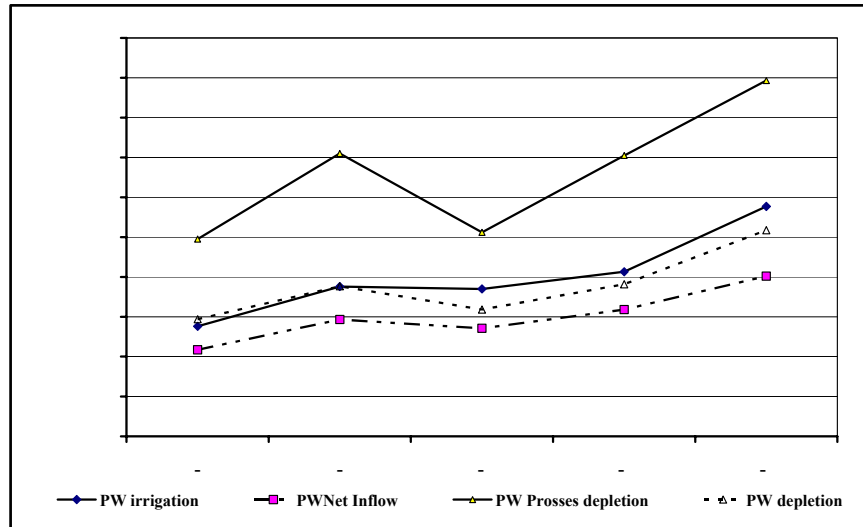
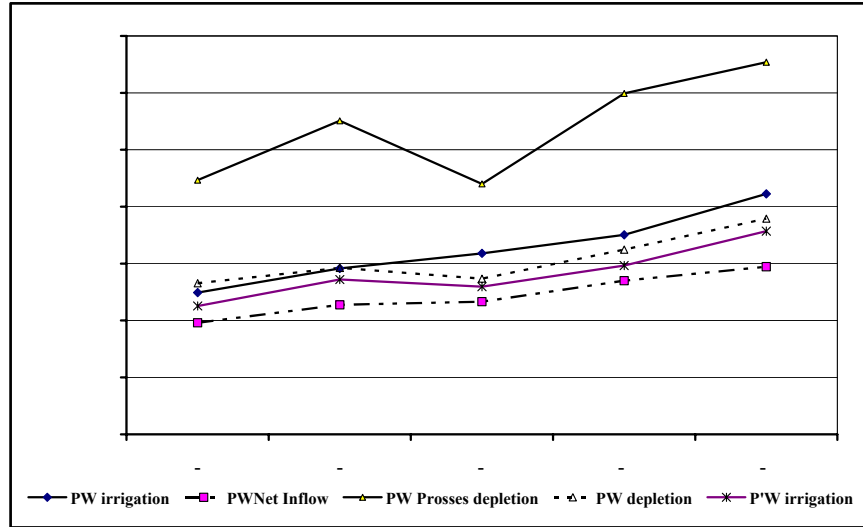
/ / / /

()



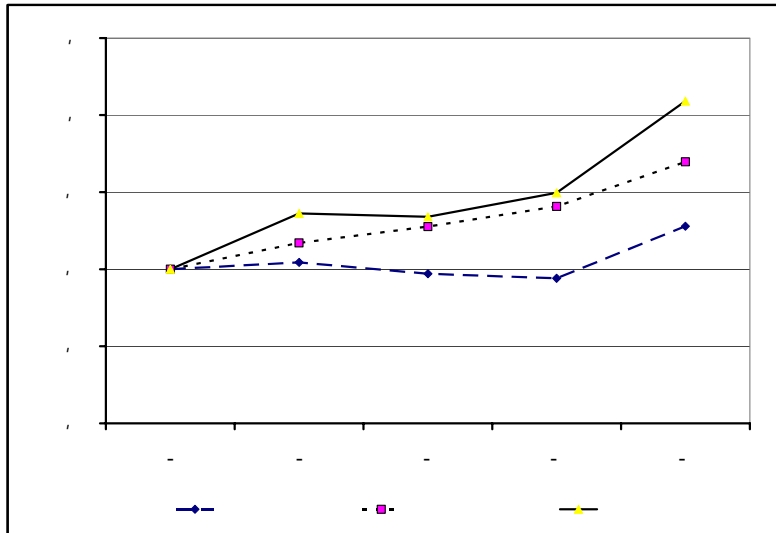
()







()





()

()



- Allan.T, Productive efficiency and allocative efficiency: why better water management may not solve the problem, *Agricultural Water Management* 40 71-75, 1999.
- Barker.R, D.Dawe, Economics of water productivity in management water agriculture, Water Productivity Workshop, International Water Management Institute, Colombo, Sri Lanka. ,2001.
- Cabangon.R.J, Comparing water input and water productivity of transplanted and direct-seeded rice production systems, *Agriculture Water Management*, 57, 11-31, 2002.
- Molden D, and R. Sakthivadivel, Water accounting to assesses and productivity of water. *J. Water Resources Development*, 15 (1/2): 55-72, 1999.
- Molden, D, Accounting for water use and productivity, System-Wide Initiative on Water Management (SWIM) Paper No. 1, Colombo, Sri Lanka: International Water Management Institute, 1997.
- Molden. D., R.Sakthivadivel, Z.Habib, Basin-level use and productivity of water: examples from South Asia. Research Report 49, International Water Management Institute, Colombo, Sri Lanka, 2001.
- Zhang H, Water productivity in semi-arid Area, Water Productivity Workshop, International Water Management Institute, Colombo, Sri Lanka, 2001.