



porhemmat@scwmri.ac.ir

Advanced Very High Resolution) AVHRR
Thematic)TM

(Radiometer
(Mapper



Rango

.(Engman)

SSM/I SMMR

.(Rango)
NIMBUS-) - SMMR (Passive Microwave Data)
Defense) DMSP (Special Sensor Microwave Imager) SSM/I (7
(Meteorological Satellite
*

(GOES) (NOAA) () Rango

(SPOT)

(pixel)



DMSP SSM/I TM () Dorothy

MODIS

MODIS

(MODIS)

SSM/I

()

() Dorothy () Rango

1×1

TM

AVHRR

1

TM

1×1

AVHRR

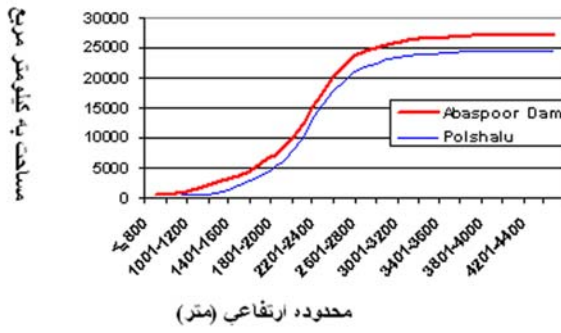
()



()

()
() ()

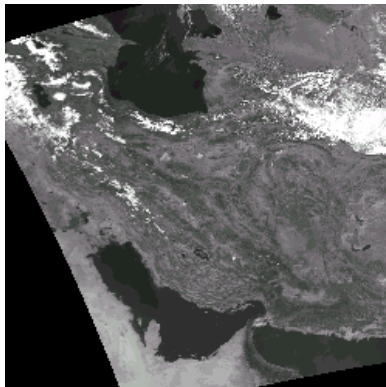
() (Scene)
()
AVHRR TM



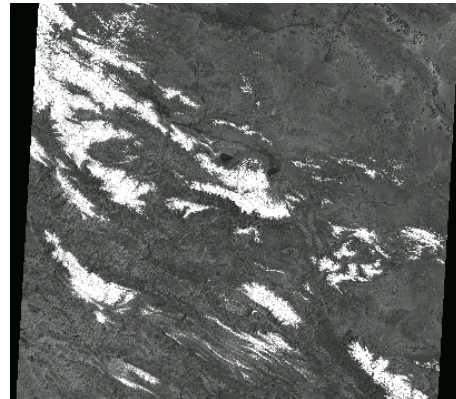
: ()

: ()
)

(



: ()



: ()



()

()

/ /

()

()

)

(/

TM

/

AVHRR

()

)

(/

TM

AVHRR

AVHRR

:()

()

/	/		

()

()

(/

)



()

AVHRR

TM

:()

()

8.1	1574.9	1713.2	2018.23	Pol 1	
16.9	372.86	448.68	494.82	Pol 2	
18.6	273.99	336.72	347.15	Pol 3	
20.6	189.31	238.42	292.02	Pol 4	
14.0	142.84	166.18	182	Pol 5	
30.7	76.63	110.61	162.35	Pol 6	
21.7	57.33	73.26	119.8	Pol 7	
31.2	60.31	87.66	111.73	Pol 8	
29.6	67.71	96.17	104.99	Pol 9	
29.3	35.43	50.14	71.91	Pol 12	
32.7	40.25	59.79	58.71	Pol 13	
32.2	23.82	35.15	53.59	Pol 14	
26.6	24.72	33.69	50.33	Pol 15	
35.5	14.58	22.61	37.28	Pol 16	
28.9	29.8	41.89	34.69	Pol 17	
43.5	9.48	16.77	26.14	Pol 18	
75.4	5.05	20.56	24.1	Pol 19	
56.5	8.78	20.2	23.45	Pol 20	
31.4	10.96	15.97	20.49	Pol 21	
58.2	4.64	11.09	20.35	Pol 22	
65.5	1.62	4.7	9.48	Pol 23	

()

()

()

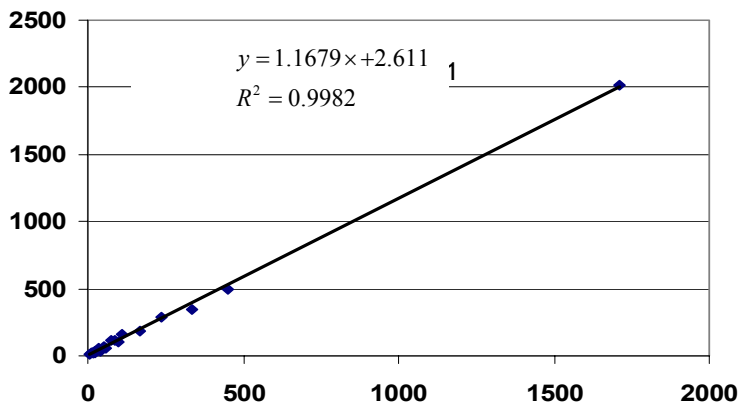
()



() ()

()

()



:()

()

() () ()



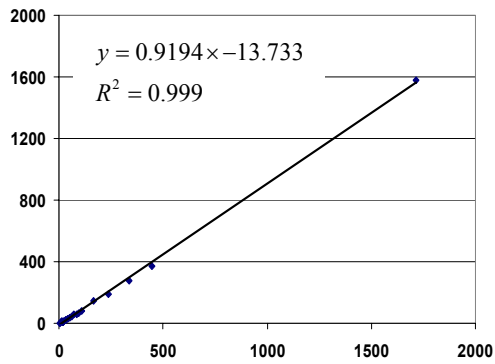
()

()

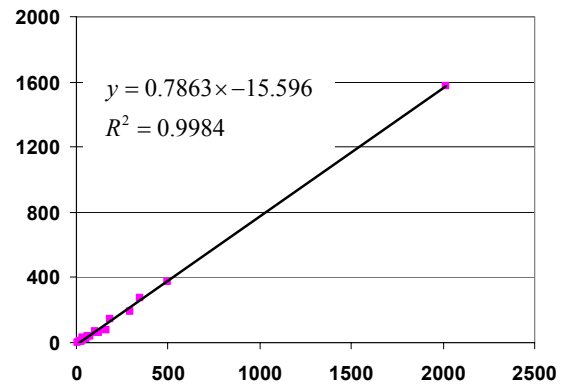
() : ()

70.7	20.0	199	340	408

()
()



: ()

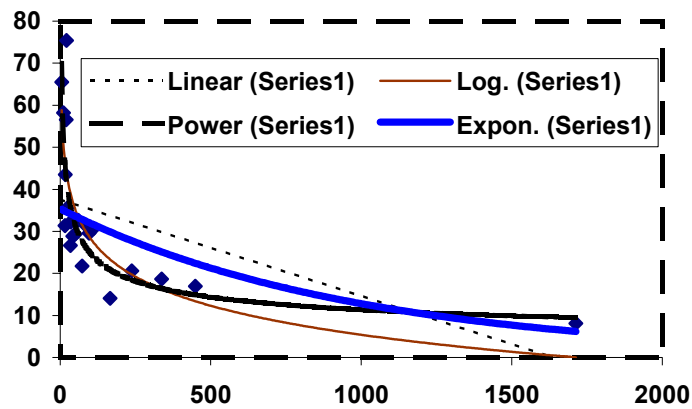


: ()



()

$y = 118.26x^{-0.3393}$	0.89	
$y = -9.9769\ln(x) + 74.303$	0.80	
$y = 35.367e^{-0.001x}$	0.71	
$y = -0.023x + 37.624$	0.49	

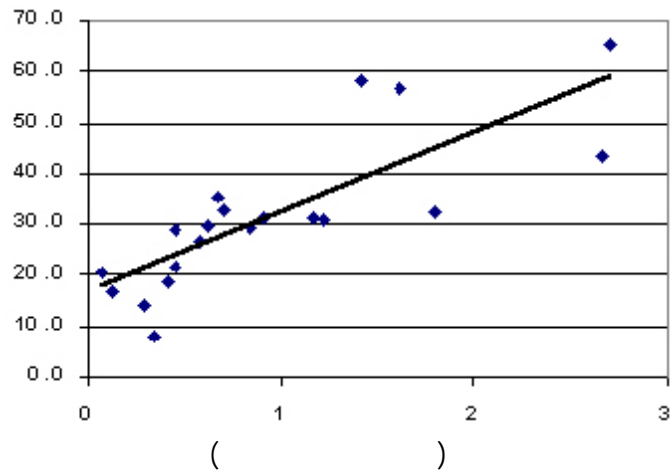


()

:()

:()

$y=15.673x+16.67$	0.8	
$y=17.812e^{0.4882x}$	0.75	
$y = 11.901\ln(x) +36.242$	0.75	
$y = 118.26x^{-0.3393}$	0.74	



:()

:()

	()	()		()	()
0.13	923	7142	0.37	512	1390
0.18	862	4732	0.07	600	9000
0.10	331	3264	0.15	1400	9402
0.12	902	7285	0.60	980	1645
0.10	790	8091	0.19	517	2733
0.09	406	4751	0.27	1250	4592
0.08	165	2054	0.43	1150	2694
0.12	1000	8500	0.18	1436	7948
0.25	632	2500	0.14	1002	7242
0.28	1200	4224	0.20	380	1868
0.31	345	1112	0.18	489	2777
0.18	314	1776	0.07	602	8868
0.05	652	13371	0.12	255	2097

-



AVHRR

AVHRR

TM

TM

AVHRR

/

AVHRR

TM

:

-

-

/

-

AVHRR

-

TM

TM

AVHRR



AVHRR

AVHRR

TM

AVHRR

)
AVHRR

(

TM

AVHRR



- 1- Avery, T. E., and G. L., Berlin, Fundamentals of Remote Sensing and Airphoto Interpretation, 4th Edit, Macmillan Pub, 472 pp., 1992.
- 2- Carroll, T. R., 1990, Operational Airborn and Satellite Snow Cover Products of the National Operational Hydrologic Remote Sensing Center, Proceedings of the Forty-seventh Annal Eastern Snow Conference, June 7-8, 1990, Bangor, Maine, CRREL Special Report 90-44, 1990.
- 3- Cracknell, A. P., The Advanced Very High Resolution Radiometer (AVHRR), Taylor & Francis Pub., 534 pp., 1997.
- 4- Dorothy, K., et al., 2000, Intercomparison of Satellite-derived Snow-cover Maps, Annals of Glaciology, Vol. 31, p369-376., 2000.
- 5- Engman, E.T., and R.J., Gurney, , Remote Sensing in Hydrology, 1st Edit, Chapman and Hall, p 225., 1991.
- 6- Hall, D. K., G.A. Riggs, V.V. Salomonson and G.R. Scharfen, , Earth Observing System (EOS) Moderate Resolution Imaging Spectroradiometer (MODIS) Global Snow-Cover Maps (In: Proc. Of Remote Sensing and Hydrology 2000, Santa Fe, New Mexico, USA.), p55-60., 2001.
- 7- Rango, A., V.V., Salomonson, and J.L., Foster, Seasonal Stream flow Estimation in the Himalayan Region Employing Meteorological Satellite Snow Cover Observations, Wat. Resour. Res., 13, 109-112., 1977.
- 8- Rango et al. Snow and Ice in: Remote Sensing in Hydrology and Water Resources, Edited by Schultz, G.A., and E.T. Engman, Pub by Springer-Verlag., 2000.
- 9- Rott, H. and T. Nagler, Snow and Glacier Investigation Using SIR-C/X-SAR First Results, In: Proceedings First ERS-1 Symposium; Space at the service of Our Invironment, Cannes, France, p577-582., 1993.
- 10- Schultz, G. A. and E. T. Engman, Remote Sensing in Hydrology and Water Management, Springer Pub., 483pp., 2000.