



roghani37@scwmri.ac.ir
mgh42@hotmail.com
tabatabaei@scwmri.ac.ir

-
-
-



[]

[] Brooks

[]

Jons .

[]

RAFTS

[] []

[] []

()

¹ Hewlet and Trondle



.[]

[] []Maidment []Clark

[]Donker []Laurenson

.[]

.[]

.[]

.[]

.[]



/

o o o o

.()

Ilwis

.()

:()

()	(%)	()	()	()	()	()
/				/	/	/

RAFTS

WP SMEC

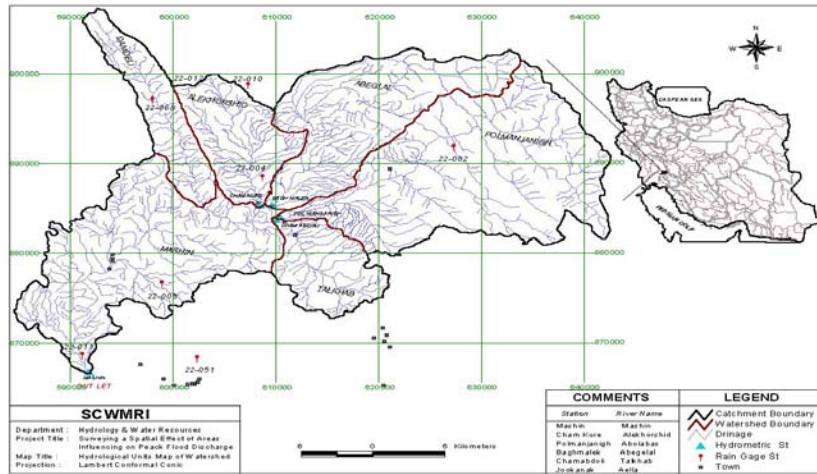
[]

.()

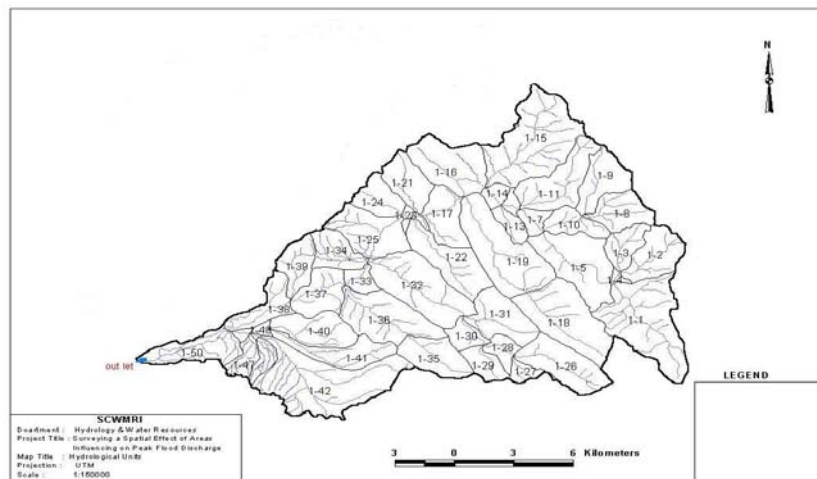


CN ()

$$S = [P+ Q-(Q + PQ)] \quad ()$$



:()



:()



$$CN = \frac{Q}{S} \quad (1)$$

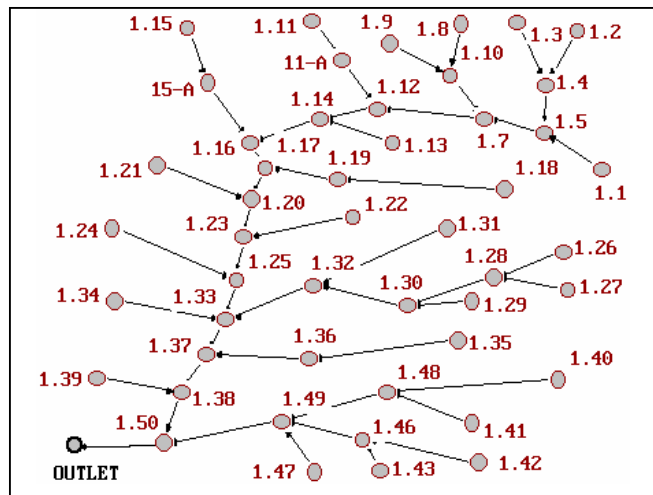
Q :
P :
CN :
S :

$$\left(\frac{Q}{S} \right)$$

/ /

$$R = \frac{|Q_{obs} - Q_{sti}|}{Q_{sti}} \quad (2)$$

= Qst = Qob :

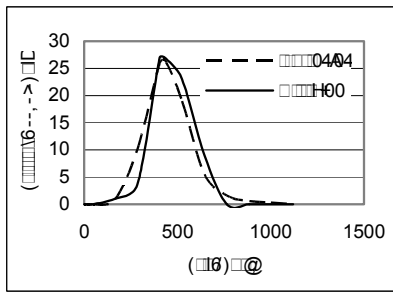


:()

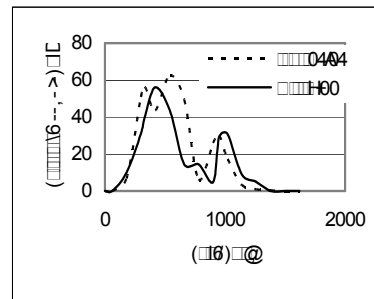


:

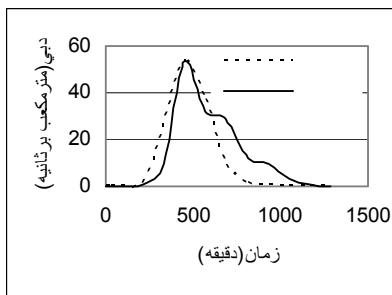
	/	/	III	//
	/	/	III	//
	/	/	II	//
	/	/	III	//
	/	/	III	//
	/	/	III	//
	/	/	III	//
	/	/	III	//



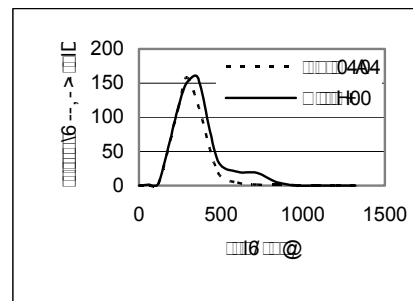
// : ()



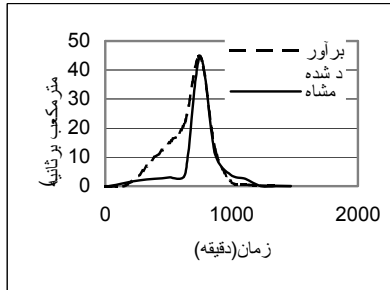
// : ()



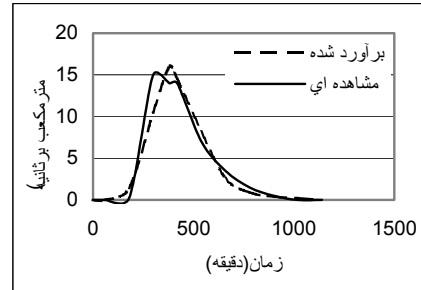
// : ()



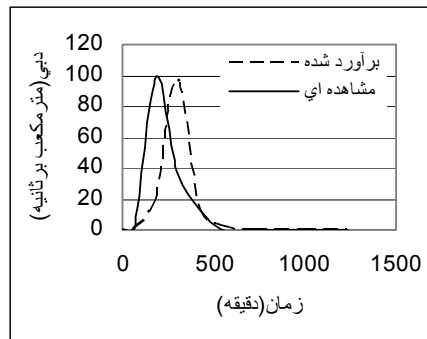
// : ()



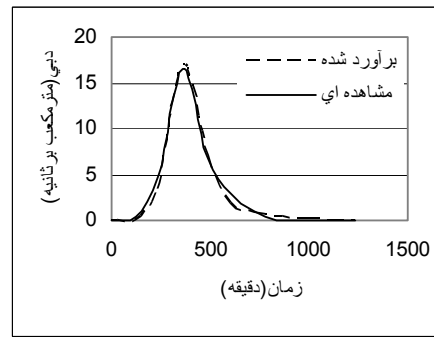
// : ()



// - ()



// : ()



// : ()

T

()

() .

T : ()

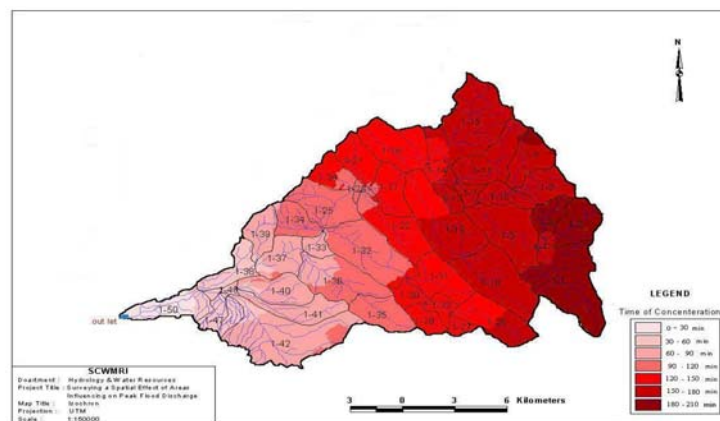
H0=H1	/	/	/	- /	/			
H0=H1	/	/	/	- /	/			



TC

()

Arcview



:()



()

()

()

:()

	*	(%)	(%)	(cms)	(cms)	()	
/	/	/	/	/	/	/	
/	/	/	/	/	/	/	
/	/	/	/	/	/	/	
/	/	/	/	/	/	/	
-	/	/	/	/	/	/	
/	/	/	/	/	/	/	
/	/	/	/	/	/	/	

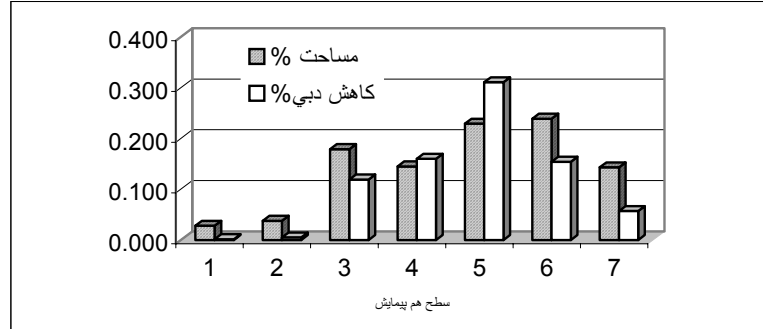
()

/ /

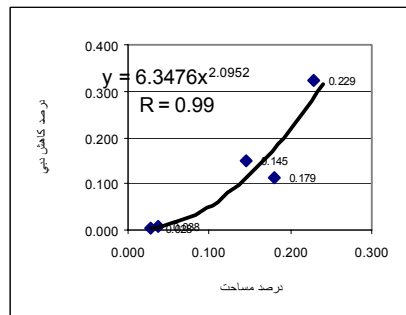
/

/ /

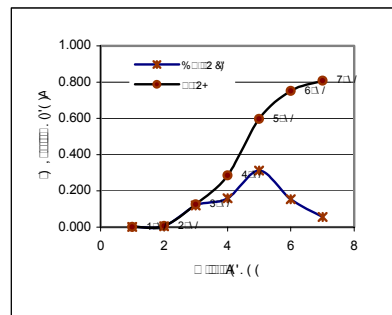
()



() :



() :



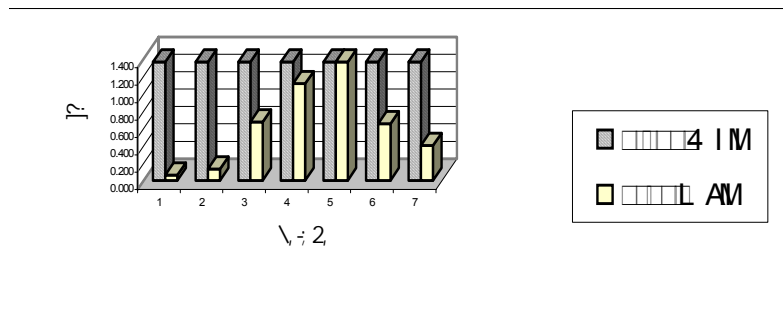
() :

()



/ / / / /

.()

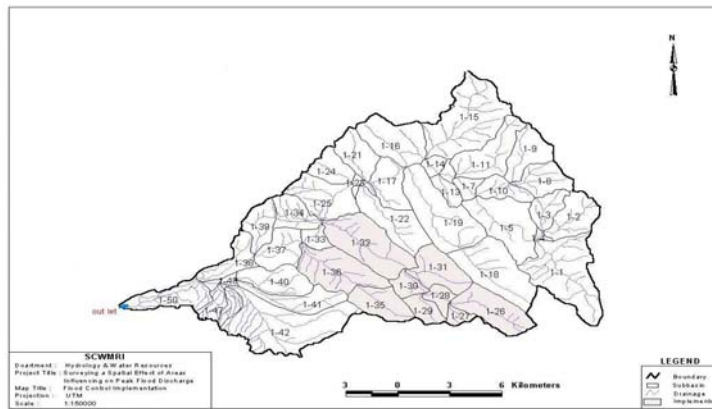


:()

.()

:()

	(%)	(%)	(cm)	(cm)	()	
/	/	/				- - - - - - - - - -



:()

(...)



)

(

RAFTS



- Brooks, K. N., P.F., Folliott, H.M., Gregersen, J.L. Thames, Hydrology and the management of watershed. Iowa state University, vol1, pp, 220, 1991.
- Clark,C.O., storage and the unit hydrograph, Trans.Am. Soc. Civ.Eng.110, 1149-1446, 1945.
- Donker, N.H.W., Automatic extraction of catchment hydrologic properties from digital elevation model, ITC Journal, 257-265, 1992.
- Gafouri, R.A, Deterministic analysis and simulation of runoff in urban catchment, Ph.D. Theses, Wollongong University, Wollongong NSW, Australia, 1996.
- Jons, J.A. A., The physical causes and characteristics of floods, In floods Vol II, PP, 93. Edited by Parker, 2000.
- Laurenson, E. M., A catchment storage model for runoff routing, Journal of hydrology, vol. 2, pp. 141-163, 1964.
- Maidment, D.R., J.F. Olivera, A. Calver, A. Eatherral and W. Fraczek, A Unit Hydrograph Derived From a Spatially Distributed Velocity Field, Accepted for publication in a special issue of the journal Hydrological Processes, 1996.
- Maidment, D. R., A spatially distributed unit hydrograph by using GIS in application hydrology and water of geographic information system in water resources management, edited by Kovar and Nachtnebel,181-192, 1993.