



## (Visual Modflow2.8)

[mrsarvar@yahoo.com](mailto:mrsarvar@yahoo.com)

[k\\_badv@yahoo.com](mailto:k_badv@yahoo.com)

(VisualModflow)



( )

( )

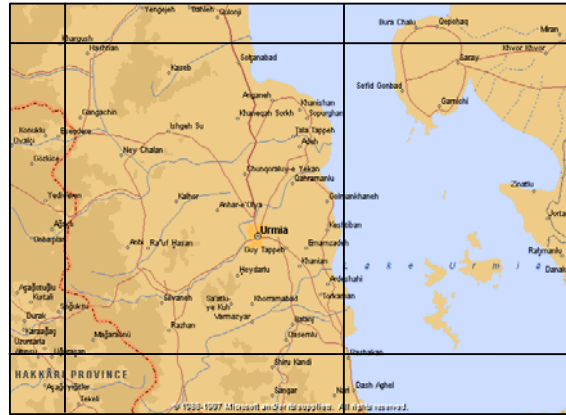
( )

) c

( )



( , )



( )

$$\frac{\partial}{\partial x} \left( K_{xx} \frac{\partial h}{\partial x} \right) + \frac{\partial}{\partial y} \left( K_{yy} \frac{\partial h}{\partial y} \right) + \frac{\partial}{\partial z} \left( K_{zz} \frac{\partial h}{\partial z} \right) - w = S_s \frac{\partial h}{\partial t} \quad (1)$$

$$= S_s (L^{-1}) \quad = w (L) \quad = h$$

$$= K_{zz}, K_{yy}, K_{xx} \quad = t (L^{-1})$$

$$[L t^{-1}]$$

$h(x,y,z)$



Braken )

.(siek, 1967

.(MCDonald, Harbaugh, 1988)

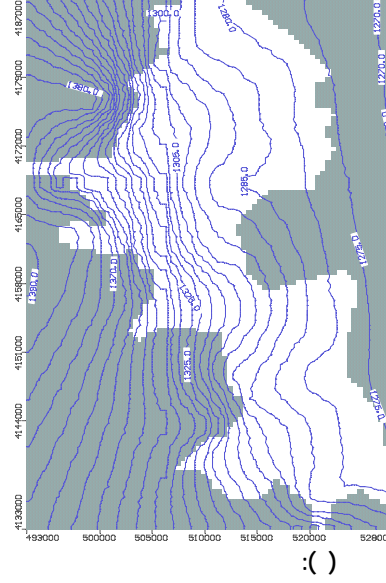
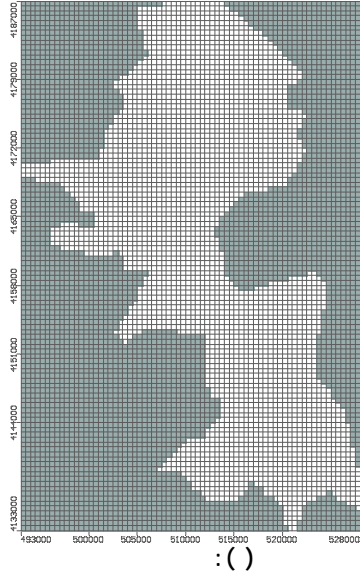
( )

*Surfer*

*GRD*

*GRD*

( )



( : (

$$Q=KIA$$



$(S_y)$

$(K)$

$S_y \quad K$

*SURFER*

*GRD*

*Stress* )

*(Time Step)*

*( $\Delta t$ )*  
*(Period*



$$CRIV = \frac{K.L.W}{M} \quad (1)$$

(M)                      (K)                      (W)                      (L)

*CRIV*

(F.A.O, 1979)



.(Prikett,1975)

Bittinger, )

( 1967





*S K*



- 
- Bittinger, M.W. Duke, H.R. and longenbaugh R.A. Mathematical simulation for Better Aquifer Management , publication No. 72 of the LASH symposium of Haifa, pp. Soq-51, 1967.
- Braken siek, D.L. Finite Differencing Methods , water Resources Research, Vol. 3, No. 3, pp. 847-860, 1967.
- F.A.O. Drainage-desin factor. F.A.O. irrigation and drainage paper no.38, 1979.
- MCDonald, M.G. and Harbaugh, A.W, A Modular Three-Dimentional Finite- Difference Groundwater Flow Model , U.S.Geological survey, 1988.
- Mirabzadeh, M. Mathematical models for two dimensional solute transport&dispersion in groundwater using dynamic programming metod, 1972.
- Prikett, T.A. Modeling Techniques for Ground water Resource Evaluation. Advance in Hydroscience, Vol. 10 , pl-143, 1975.
- RAO, S.S. optimization; Theory and Applications, Indian Institute of Technology, kanpur, 1979.
- Todd, J. survey of Numerical Analysis , MCGraw-Hill, New-York, 1962.